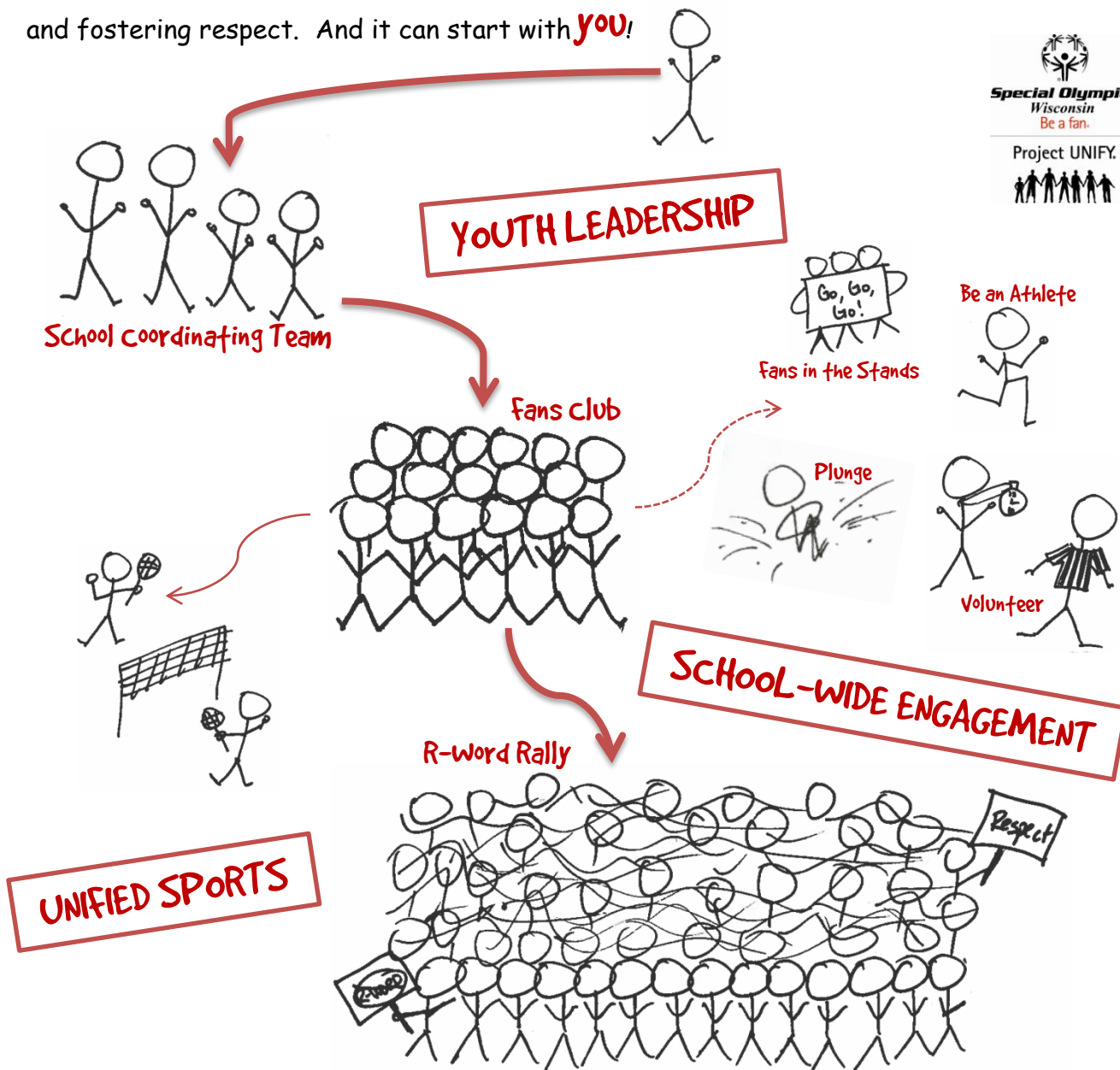


# Project UNIFY School

A sustaining Project UNIFY School is comprised of three core components: sports, youth leadership, and a school-wide activity. This diagram visually explains how to go from one individual who wants to create awareness to an entire student body dedicated to changing school climate and fostering respect. And it can start with **you!**



Let's talk it through... Start by organizing a School Coordinating Team (SCT) comprised of two teachers (one Special Education and one General Education) and two students, (one with and one without a cognitive disability). Since there is power in numbers, the SCT should recruit students both with and without cognitive disabilities to join a Fans Club. These students then can participate in Unified Sports, Fans in the Stands, Plunge, or volunteer at different SOWI events. They also can assist the SCT in planning a school-wide event (i.e. R-Word rally, Get Into It, etc.) that engages the entire student body, making them aware of the abilities of individuals with cognitive disabilities. As a result of these efforts, respect and inclusion will become everyday occurrences in your school. ☺